

1. UML DIAGRAM

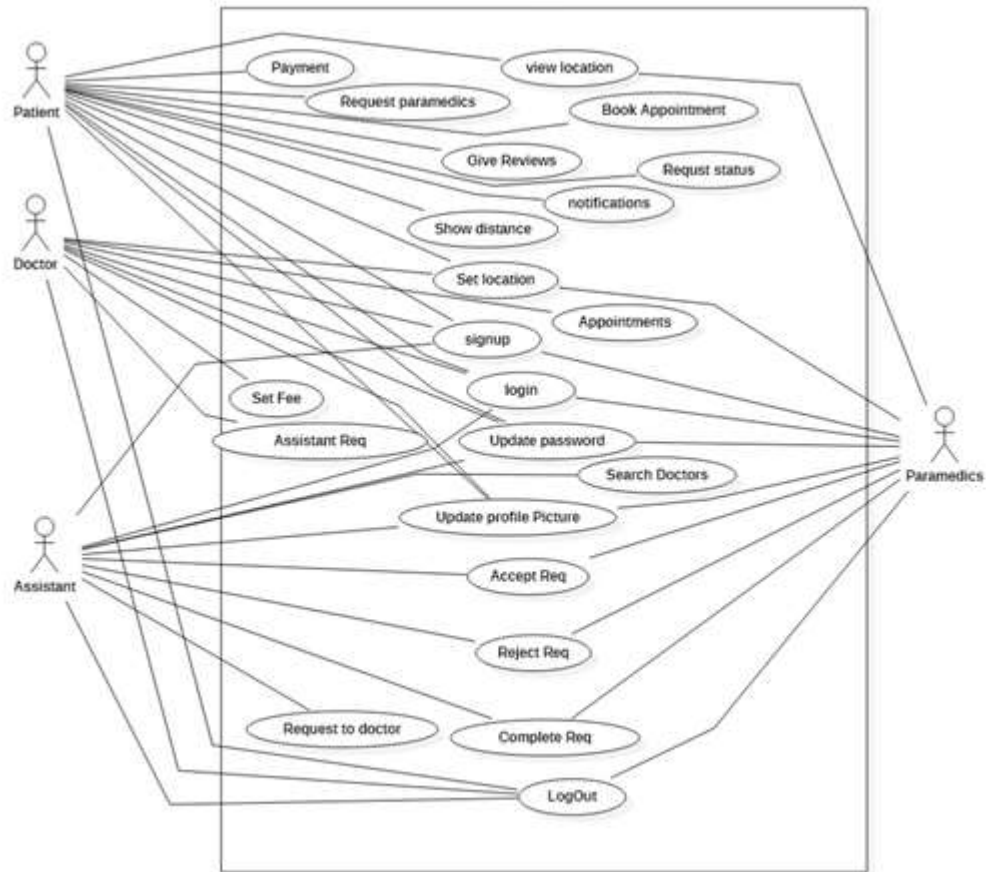


Figure 1.1 UC-1

2. Use Case Detail (Table)

Use Case ID	UC-1
Use Case Name:	Main use case
Actors	User
Description	The user wants to select one of the modules.
Preconditions	The user must have to open the application
Post conditions:	User successfully opens one of the modules.
Normal Flow	User clicks

3. Sequence Diagram

3.1. Assistant Sequence Diagram:

- Assistant will have to log in.
- If he has no account, then sign up.
- Accept, reject, and complete the appointment.
- Request panel
- Request to doctors

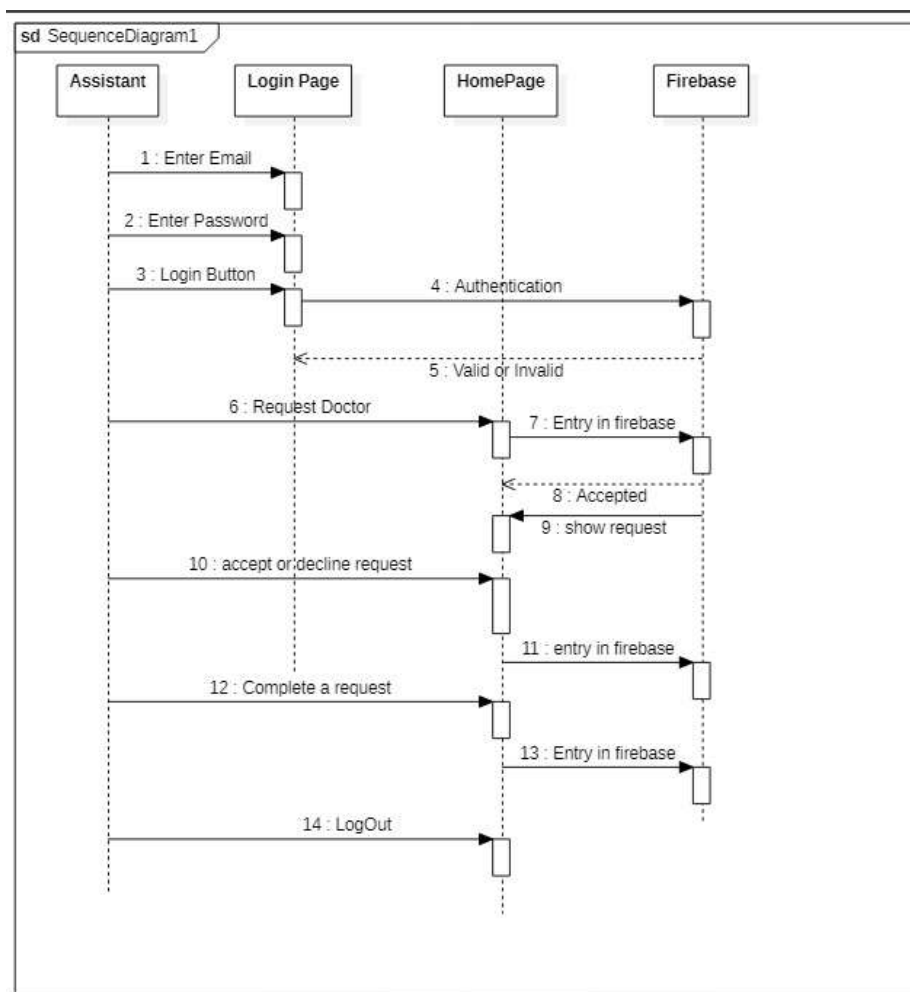


Figure 3.1 SD-1 Assistant

3.2. Patient Sequence diagram:

- Patient will have to log in.
- If the patient has no account, then sign up.
- Can change his information
- View Doctors on his console
- Change password.
- Book an appointment.
- Check the location of the doctor
- Check the distance of the Doctor.

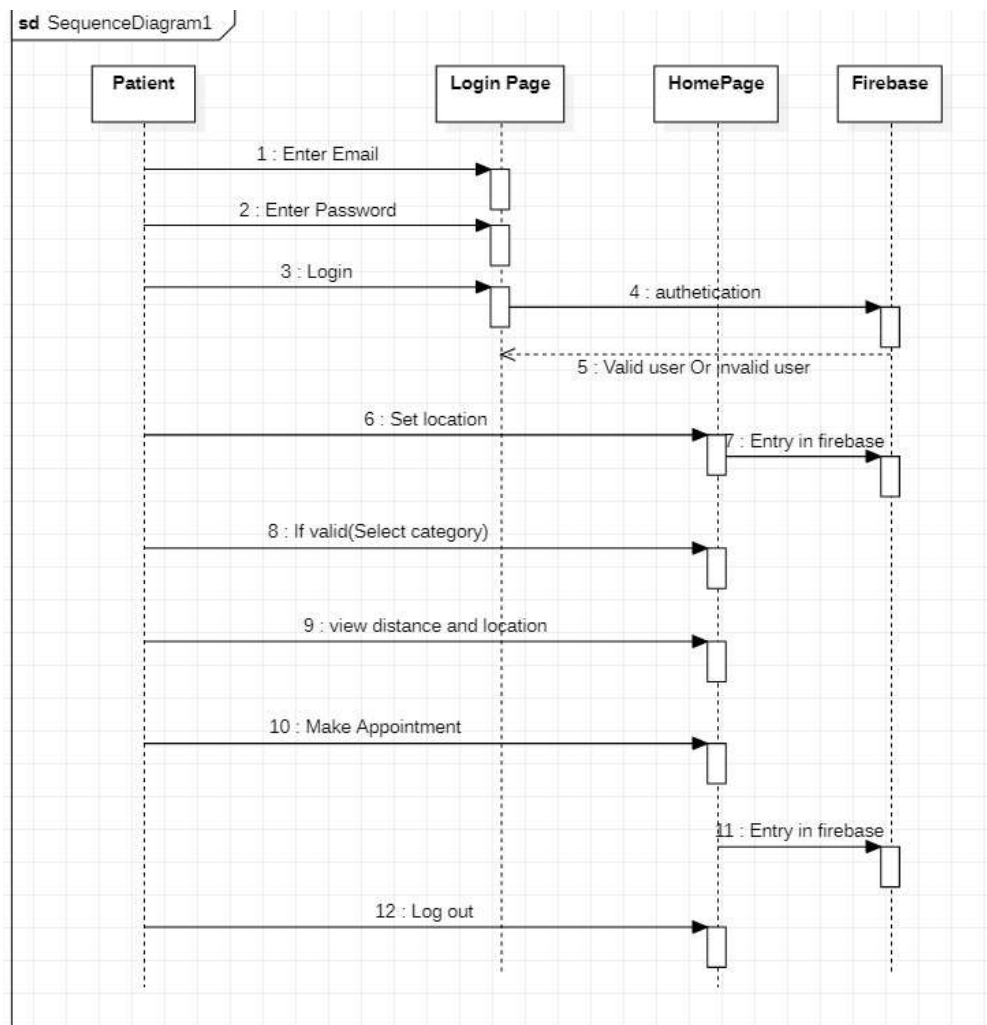


Figure 3.2 SD-2 Patient

3.3. Doctor Sequence Diagram:

- Doctor will have to log in.
- If the doctor has no account, then sign up.
- Accept and reject requests for assistance.
- Delete affiliated assistant.
- Can view the associated assistant profile
- Can able to change the password
- Can view accepted appointments on the main Console.

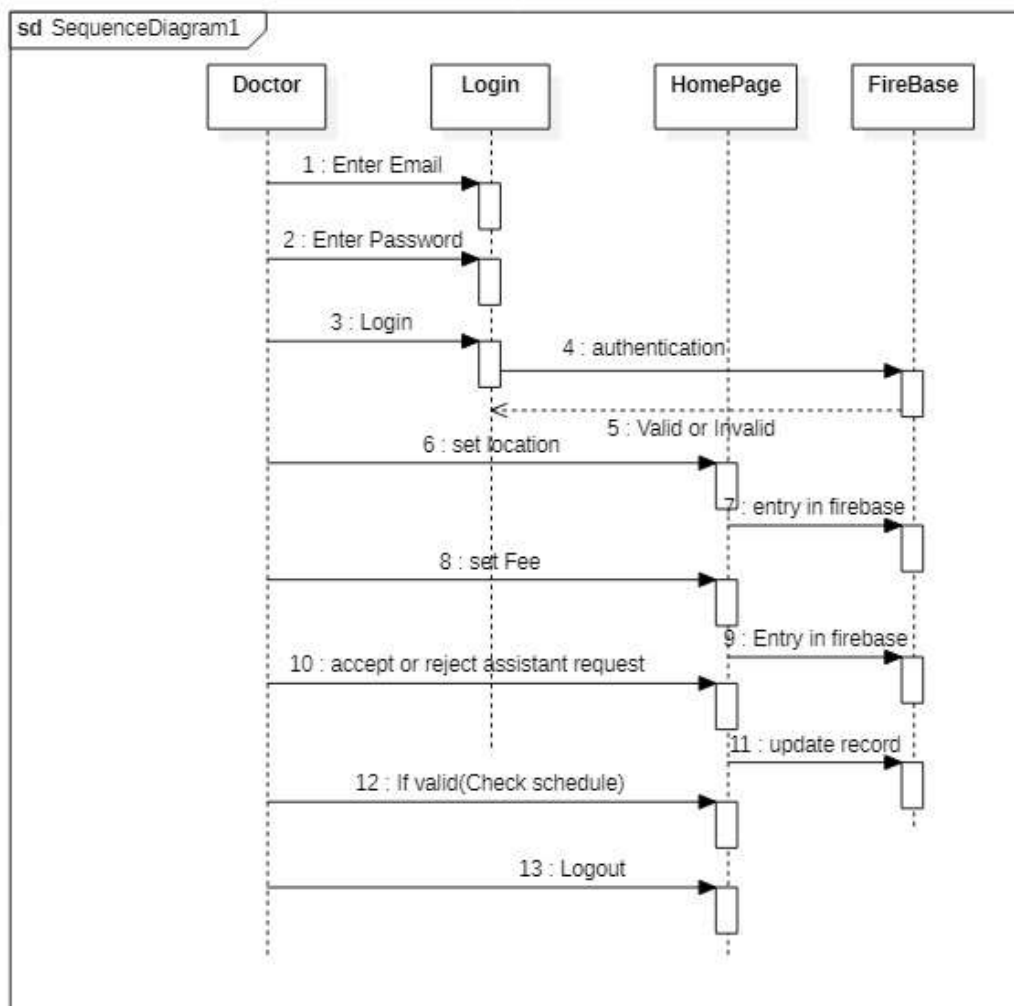


Figure 3.3 SD-3 Doctor

3.4. Paramedics Diagram:

- Paramedics will have to log in.
- If paramedics have no account, then sign up.
- Accept and reject the request of patients.
- Can able to change the password.
- Can view appointments on the main Console.

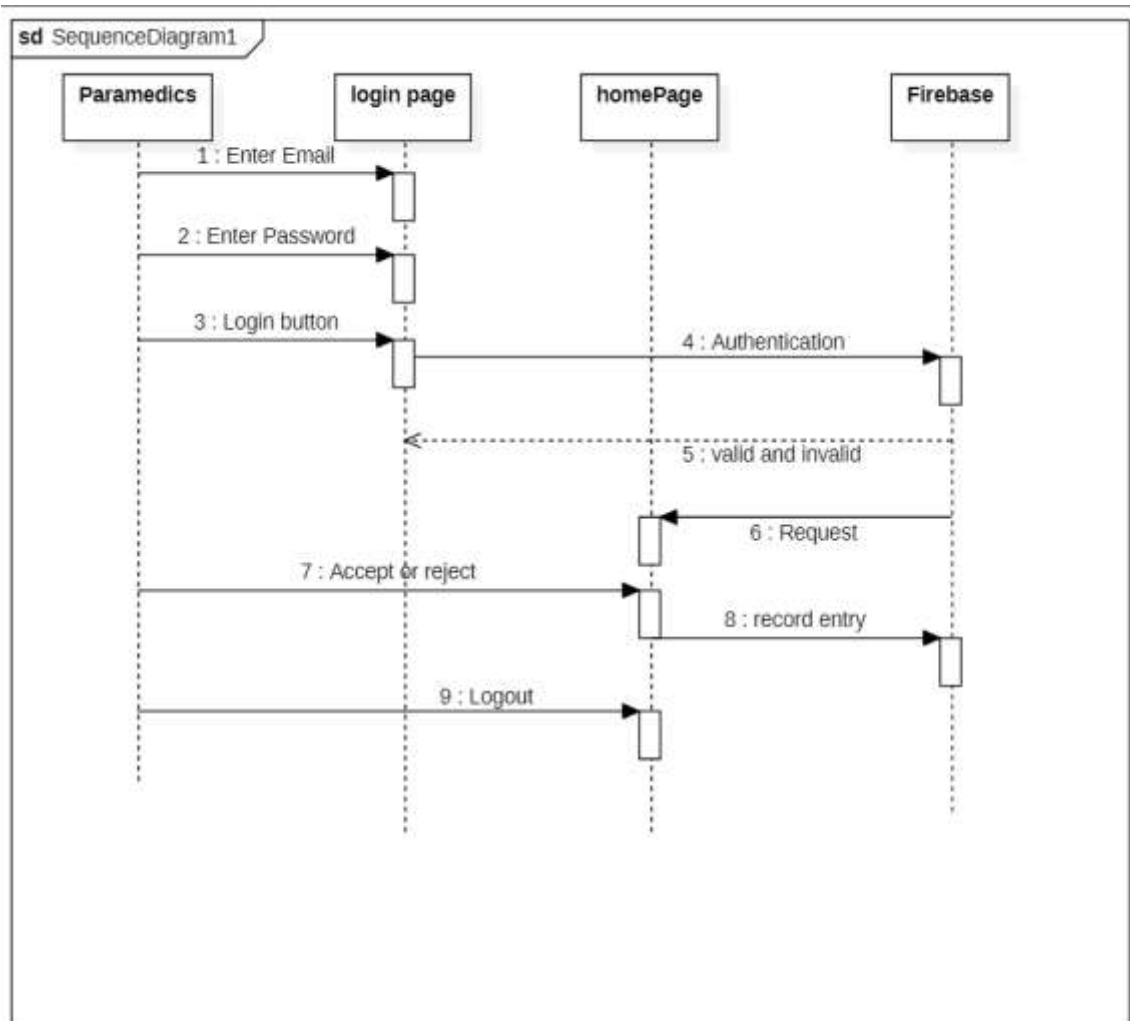


Figure 3.4 SD-4 Paramedics

4 Class Diagram

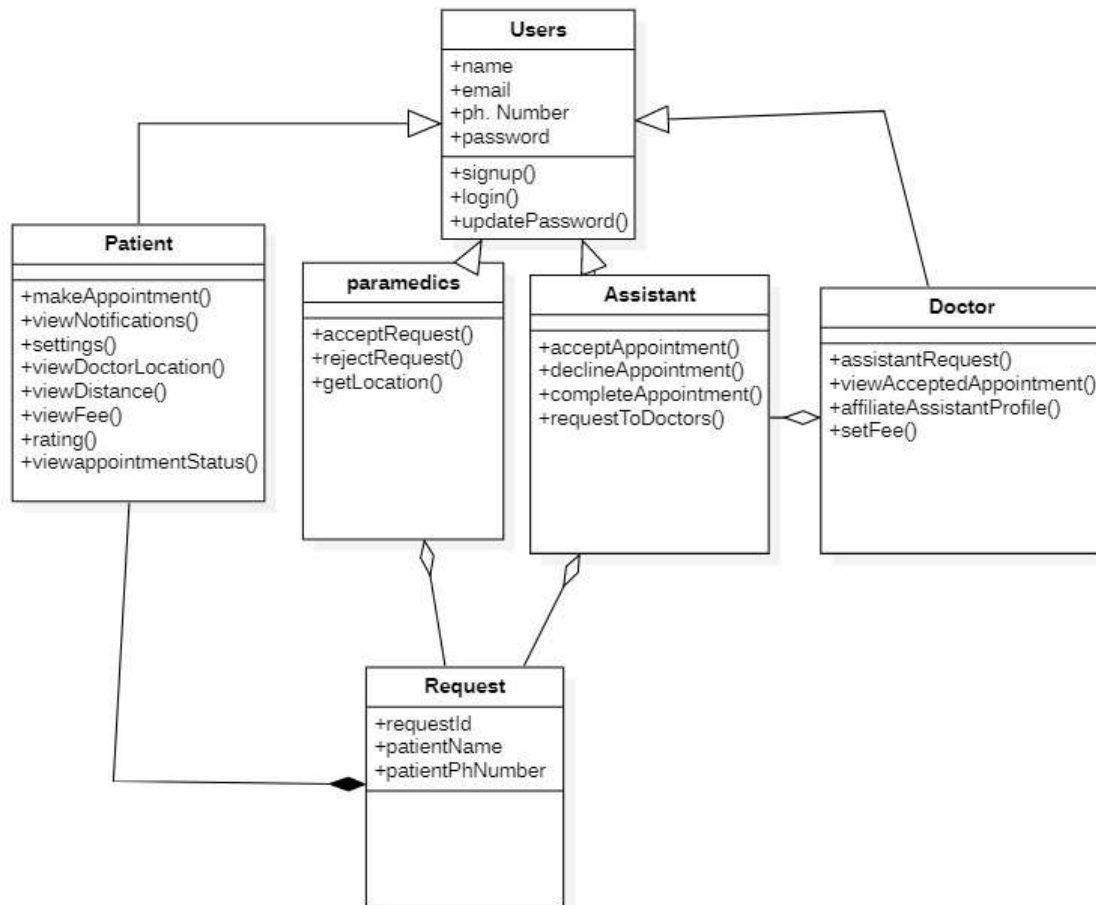
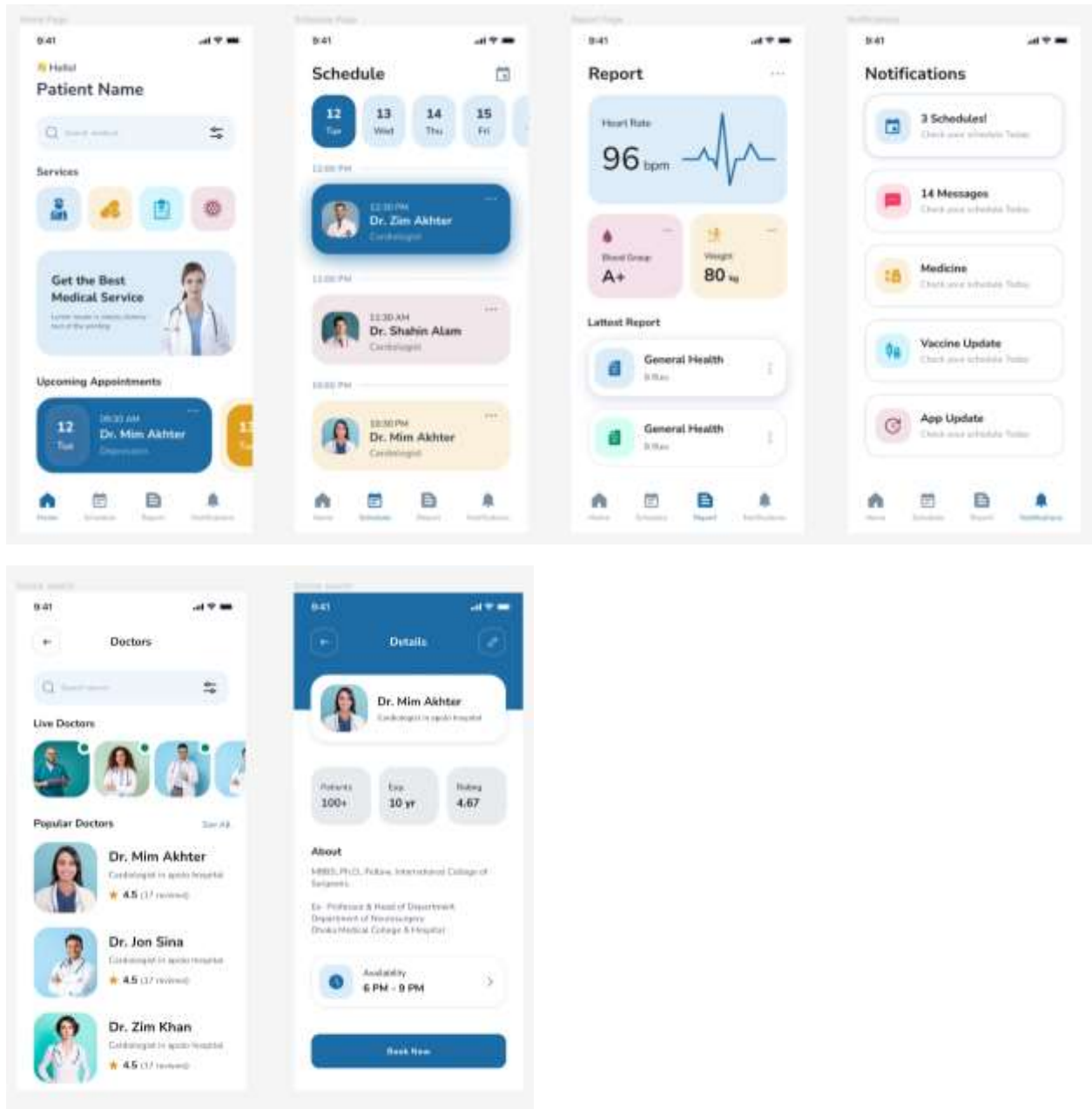


Figure 4.1 CD-1

5 Prototypes

5.1 Patient Screen:



5.2 Doctor Screen:

